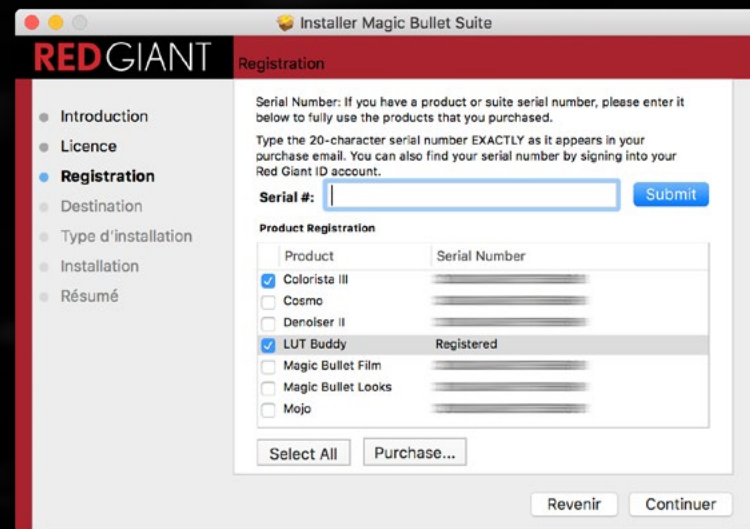


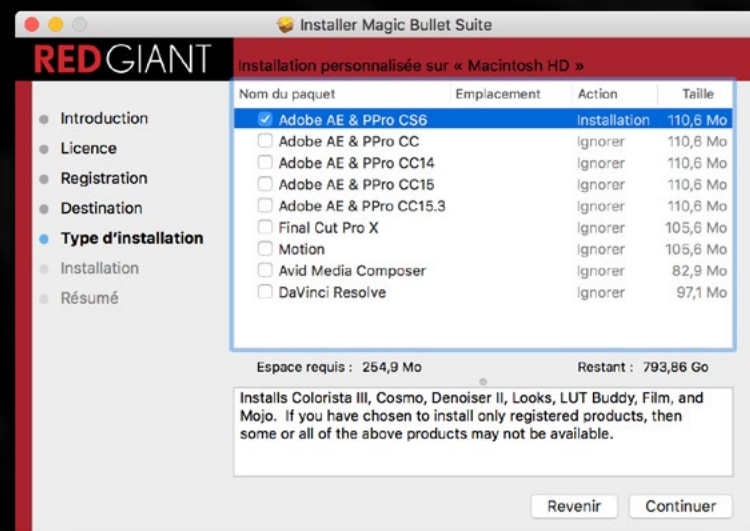
12) INSTALL & USE LUT BUDDY (FOR CS6 ONLY!)

1) Download the trial version of Magic Bullet Suite 11.1.4. The LUT Buddy is included.
<https://support.redgiant.com/hc/en-us/articles/230764087-Where-is-LUT-Buddy->

2) Unzip and launch the installer. At the « Registration » step you have to check « LUT Buddy » and another plugin, for example « Colorista III » (because of a bug LUT Buddy will not be installed if you check only « LUT Buddy »).

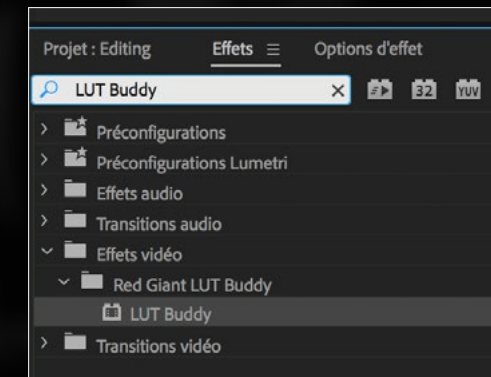


3) At the next step you have to select your version of Premiere Pro and After Effects.

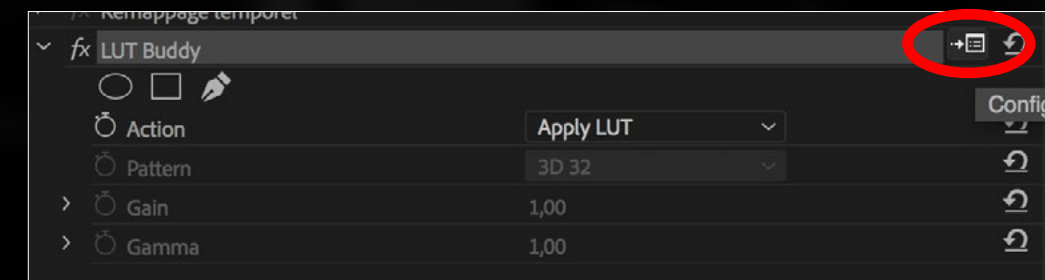


4) Once the installation is complete, launch Premiere Pro.

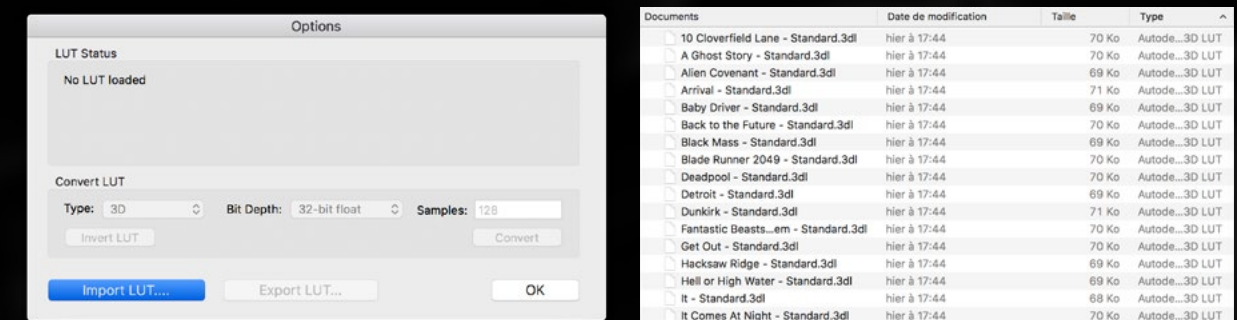
5) In the « Effects » panel, search « LUT Buddy » and apply it to your clip in your timeline.



6) In the « Effect Controls » tab, click the settings button, as show below:



7) Click « Import LUT... » button. Then, select a LUT in **.3DL** format. Then click « Ok ».



8) Done! The LUT must be applied to your clip (play the clip or move to next frame to refresh the preview). If the LUT is not applied you have to do the following trick: switch LUT Buddy to « Draw Pattern », version « 3D 64 », then switch back to « Apply LUT ».

